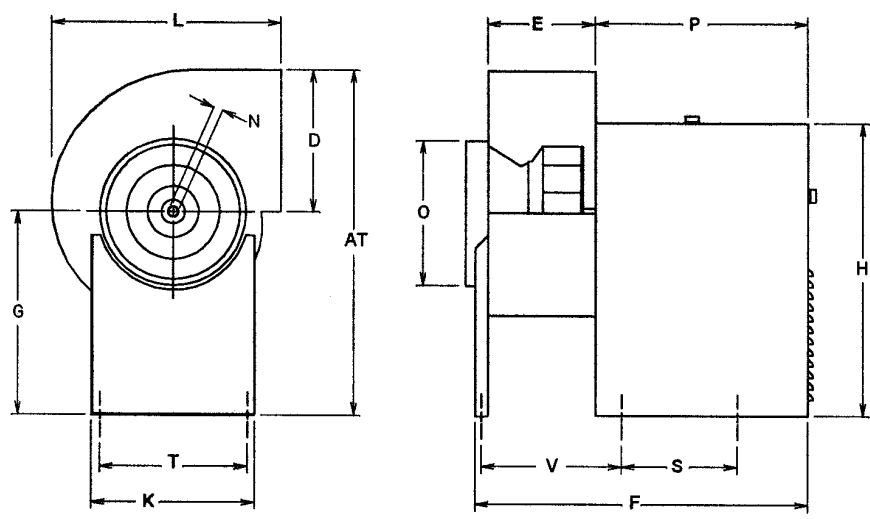


BI & BI-RM DIMENSIONS

MODEL BI

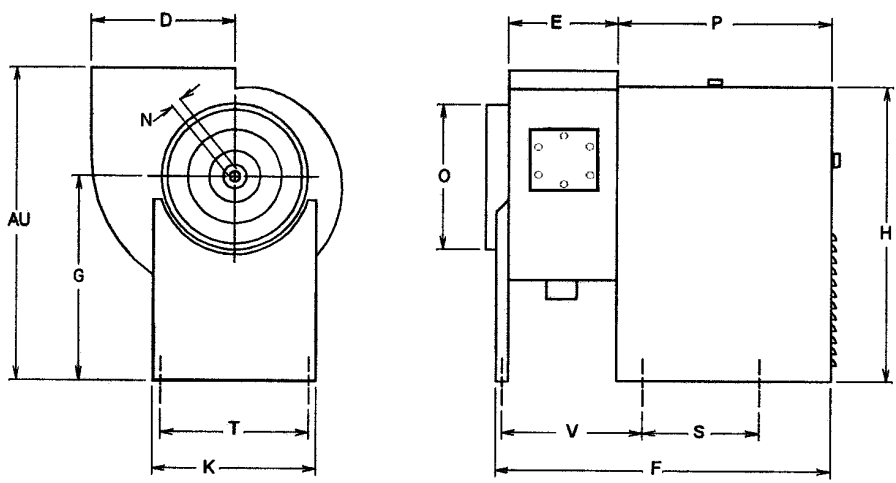


DIMENSIONS (inches)

MODEL	AT	AU	D	E	F	G	H	K	L	N	O	P	S	T	V	WT.
BI-10	26-3/4	23-5/8	11-5/16	8-1/4	27-3/4	15-1/4	21-5/16	13-3/16	17-3/8	3/4	11	17-1/4	11-3/4	11-7/16	-- --	90
BI-12	33-1/16	30-1/16	13	9-7/8	33-1/4	20-1/16	29-1/8	16-9/16	20-1/2	1	12-7/16	21-1/8	11-1/2	14-11/16	13-1/8	157
BI-13	34-5/16	30-13/16	14-3/8	10-3/4	34-1/8	20-1/16	29-1/8	16-9/16	22-1/2	1	14-3/8	21-1/8	11-1/2	14-11/16	14	170
BI-15	35-13/16	31-13/16	15-3/4	12	35-3/8	20-1/16	29-1/8	16-9/16	24-11/16	1	15-7/8	21-1/8	11-1/2	14-11/16	15-1/4	180
BI-16	39-3/8	34-11/16	17-5/8	13-1/8	36-1/2	22	31	16-9/16	26-7/8	1-3/16	17-3/8	21-1/8	11-1/2	14-11/16	16-3/8	210
BI-18	41-1/4	35-13/16	19-3/8	14-1/2	37-7/8	22	31	16-9/16	29-5/8	1-3/16	19-3/8	21-1/8	11-1/2	14-11/16	17-3/4	220
BI-20	49-1/8	42-15/16	21-1/4	15-3/4	46-7/16	28	40-7/8	25-1/4	32-1/4	1-3/16	21-1/4	27-11/16	14-5/8	22-3/4	19-3/4	357
BI-22	51-1/2	44-3/8	23-5/8	17-5/8	48-5/16	28	40-7/8	25-1/4	35-5/8	1-3/16	23-5/8	27-11/16	14-5/8	22-3/4	21-5/8	390
BI-24	57-7/8	49-13/16	26	19-3/8	51-5/16	32	46-1/2	28-15/16	39	1-7/16	26	28-15/16	18-5/16	25-1/2	23-3/8	499
BI-27	60-1/2	51-7/16	28-5/8	21-1/4	53-3/16	32	46-1/2	28-15/16	42-3/4	1-7/16	28-5/8	28-15/16	18-5/16	25-1/2	25-1/4	525

BI and BI-RM Series

MODEL BI-RM



"BI" SERIES PERFORMANCE DATA

Model BI-10

MINIMUM 1/3 HP MOTOR RECOMMENDED, 2 HP MAXIMUM
3/4" SHAFT

MAXIMUM 3800 RPM
TIP SPEED : 2.75 x RPM = FPM
WHEEL DIA. = 10.50"

CFM	OUTLET VELOCITY	1/2" SP		1" SP		1-1/2" SP		2" SP		2-1/2" SP		3" SP		4" SP		5" SP	
	FPM	RPM	BHP	RPM	BHP	RPM	BHP	RPM	BHP	RPM	BHP	RPM	BHP	RPM	BHP	RPM	BHP
300	477	1103	0.05	1528	0.12	1862	0.19	2146	0.28	2397	0.38	2626	0.49	3032	0.73	3392	0.99
500	796	1203	0.07	1583	0.16	1904	0.26	2177	0.36	2420	0.47	2643	0.59	3041	0.85	3394	1.14
700	1115	1382	0.12	1696	0.21	1972	0.32	2237	0.44	2476	0.58	2690	0.72	3076	1.01	3422	1.32
900	1433	1589	0.18	1869	0.29	2112	0.41	2332	0.53	2544	0.68	2754	0.84	3136	1.19	3472	1.54
1100	1752	1824	0.27	2064	0.40	2287	0.53	2488	0.67	2676	0.82	2855	0.98	3202	1.34	3535	1.74
1300	2071	2073	0.40	2278	0.54	2481	0.69	2669	0.84	2842	1.00	3008	1.18	3317	1.54	3612	1.95
1500	2389	2331	0.56	2512	0.72	2688	0.89	2863	1.06	3028	1.23	3182	1.41	3473	1.81	-	-
1700	2708	2593	0.76	2757	0.94	2914	1.13	3070	1.32	3224	1.51	3371	1.71	-	-	-	-
1900	3026	2859	1.01	3011	1.21	3152	1.41	3291	1.63	3431	1.85	-	-	-	-	-	-
2100	3345	3129	1.31	3268	1.53	3399	1.76	3526	1.98	-	-	-	-	-	-	-	-
2300	3664	3400	1.67	3530	1.92	-	-	-	-	-	-	-	-	-	-	-	-

Model BI-12

MINIMUM 1/2 HP MOTOR RECOMMENDED, 3 HP MAXIMUM
1" SHAFT

MAXIMUM 3300 RPM
TIP SPEED : 3.21 x RPM = FPM
WHEEL DIA. = 12.25"

CFM	OUTLET VELOCITY	1/2" SP		1" SP		1-1/2" SP		2" SP		2-1/2" SP		3" SP		4" SP		5" SP	
	FPM	RPM	BHP	RPM	BHP	RPM	BHP	RPM	BHP	RPM	BHP	RPM	BHP	RPM	BHP	RPM	BHP
400	448	950	0.06	1321	0.14	1606	0.22	1849	0.32	2065	0.43	2262	0.55	2612	0.81	2922	1.10
600	673	1003	0.08	1349	0.17	1634	0.28	1875	0.40	2084	0.52	2275	0.65	2617	0.94	2922	1.25
800	897	1102	0.11	1397	0.21	1664	0.34	1900	0.47	2113	0.62	2305	0.77	2642	1.09	2940	1.43
1000	1121	1223	0.16	1492	0.27	1720	0.40	1937	0.55	2142	0.71	2330	0.88	2671	1.24	2972	1.63
1200	1346	1365	0.22	1595	0.35	1816	0.49	2005	0.64	2185	0.81	2368	0.99	2698	1.39	2996	1.81
1400	1570	1519	0.30	1720	0.44	1917	0.60	2104	0.77	2269	0.94	2426	1.12	2737	1.54	3027	1.99
1600	1794	1681	0.40	1859	0.55	2033	0.72	2205	0.91	2369	1.10	2519	1.30	2795	1.71	3068	2.18
1800	2019	1848	0.54	2008	0.69	2165	0.87	2318	1.07	2471	1.28	2618	1.50	2885	1.94	3129	2.41
2000	2243	2017	0.69	2164	0.86	2307	1.05	2446	1.26	2583	1.48	2721	1.72	2985	2.20	3219	2.69
2200	2467	2187	0.87	2325	1.07	2456	1.27	2585	1.48	2711	1.71	2836	1.96	3085	2.48	-	-
2400	2692	2359	1.09	2491	1.32	2611	1.52	2730	1.74	2848	1.98	2963	2.23	3190	2.79	-	-
2600	2916	2533	1.34	2659	1.60	2771	1.81	2882	2.04	2991	2.29	3099	2.55	-	-	-	-
2800	3140	2708	1.63	2828	1.92	2935	2.15	3038	2.39	3140	2.65	3241	2.92	-	-	-	-

Model BI-13

MINIMUM 1/2 HP MOTOR RECOMMENDED, 5 HP MAXIMUM
1" SHAFT

MAXIMUM 3000 RPM
TIP SPEED : 3.53 x RPM = FPM
WHEEL DIA. = 13.50"

CFM	OUTLET VELOCITY	1/2" SP		1" SP		1-1/2" SP		2" SP		2-1/2" SP		3" SP		4" SP		5" SP	
	FPM	RPM	BHP	RPM	BHP	RPM	BHP	RPM	BHP	RPM	BHP	RPM	BHP	RPM	BHP	RPM	BHP
800	745	923	0.10	1220	0.21	1481	0.33	1701	0.46	1896	0.60	2073	0.76	2389	1.11	2671	1.50
1000	931	1000	0.14	1262	0.25	1497	0.39	1716	0.54	1910	0.70	2085	0.86	2398	1.22	2675	1.62
1200	1118	1096	0.18	1330	0.31	1538	0.45	1734	0.61	1924	0.79	2100	0.98	2411	1.36	2686	1.77
1400	1304	1205	0.24	1408	0.38	1604	0.53	1780	0.70	1948	0.88	2115	1.08	2426	1.51	2700	1.95
1600	1490	1321	0.31	1501	0.47	1678	0.63	1846	0.81	2001	1.00	2149	1.20	2441	1.66	2715	2.15
1800	1677	1441	0.39	1605	0.57	1763	0.75	1919	0.94	2068	1.14	2207	1.35	2470	1.80	2730	2.32
2000	1863	1565	0.49	1715	0.69	1859	0.89	2001	1.09	2141	1.30	2276	1.52	2524	1.99	2760	2.51
2200	2050	1690	0.61	1831	0.82	1963	1.04	2092	1.26	2221	1.49	2349	1.72	2590	2.21	2811	2.74
2400	2236	1818	0.75	1950	0.98	2073	1.21	2193	1.45	2311	1.70	2429	1.94	2660	2.46	2875	3.01
2600	2422	1947	0.91	2072	1.16	2187	1.41	2299	1.67	2409	1.93	2518	2.19	2735	2.74	2944	3.31
2800	2609	2077	1.10	2195	1.36	2305	1.63	2410	1.90	2513	2.18	2615	2.46	2817	3.04	-	-
3000	2795	2208	1.32	2320	1.59	2425	1.87	2524	2.16	2621	2.46	2717	2.76	2907	3.37	-	-
3200	2981	2340	1.56	2447	1.85	2547	2.14	2642	2.45	2734	2.77	2824	3.09	-	-	-	-
3400	3168	2472	1.83	2575	2.13	2670	2.45	2761	2.77	2849	3.11	2935	3.44	-	-	-	-
3600	3354	2606	2.14	2703	2.46	2795	2.78	2883	3.12	2967	3.47	-	-	-	-	-	-

Power rating (BHP) does not include drive losses.
Performance shown is for installation Type B - Free inlet, Ducted outlet.
Performance ratings do not include the effects of appurtenances in the airstream.

SI CONVERSION FACTOR

CFM x .472 = L/s SP x .249 = kPa

"BI" SERIES PERFORMANCE DATA

Model BI-15

MINIMUM 3/4 HP MOTOR RECOMMENDED, 5 HP MAXIMUM

MAXIMUM 2700 RPM

1" SHAFT

TIP SPEED : 3.93 x RPM = FPM

WHEEL DIA. = 15.00"

CFM	OUTLET VELOCITY	1/2" SP		1" SP		1-1/2" SP		2" SP		2-1/2" SP		3" SP		4" SP		5" SP	
	FPM	RPM	BHP	RPM	BHP	RPM	BHP	RPM	BHP	RPM	BHP	RPM	BHP	RPM	BHP	RPM	BHP
1300	990	921	0.18	1151	0.32	1353	0.49	1548	0.69	1722	0.89	1880	1.10	2161	1.54	2409	2.04
1600	1219	1032	0.26	1229	0.42	1411	0.60	1577	0.80	1740	1.03	1896	1.27	2176	1.77	2423	2.29
1900	1447	1156	0.35	1324	0.54	1489	0.74	1643	0.95	1784	1.18	1922	1.43	2192	1.99	2439	2.58
2200	1676	1287	0.47	1435	0.69	1579	0.91	1721	1.15	1856	1.39	1981	1.65	2220	2.21	2456	2.85
2500	1904	1422	0.62	1556	0.87	1684	1.12	1810	1.37	1935	1.64	2056	1.91	2278	2.49	2488	3.13
2800	2133	1560	0.81	1684	1.08	1800	1.35	1913	1.63	2026	1.92	2138	2.22	2352	2.83	2548	3.49
3100	2361	1700	1.04	1815	1.32	1922	1.63	2026	1.94	2128	2.25	2230	2.57	2431	3.22	2622	3.91
3400	2590	1842	1.31	1950	1.62	2050	1.94	2146	2.28	2240	2.62	2333	2.96	2518	3.66	2700	4.39
3700	2819	1985	1.62	2086	1.95	2180	2.30	2270	2.67	2358	3.03	2444	3.40	2615	4.15	-	-
4000	3047	2129	1.99	2225	2.35	2314	2.72	2399	3.10	2481	3.50	2561	3.90	-	-	-	-
4300	3276	2275	2.41	2365	2.79	2449	3.19	2530	3.60	2608	4.02	2684	4.44	-	-	-	-
4600	3504	2421	2.90	2506	3.30	2587	3.72	2663	4.15	-	-	-	-	-	-	-	-

Model BI-16

MINIMUM 3/4 HP MOTOR RECOMMENDED, 7-1/2 HP MAXIMUM

MAXIMUM 2400 RPM

1-3/16" SHAFT

TIP SPEED : 4.32 x RPM = FPM

WHEEL DIA. = 16.50"

CFM	OUTLET VELOCITY	1/2" SP		1" SP		1-1/2" SP		2" SP		2-1/2" SP		3" SP		4" SP		5" SP	
	FPM	RPM	BHP	RPM	BHP	RPM	BHP	RPM	BHP	RPM	BHP	RPM	BHP	RPM	BHP	RPM	BHP
1600	995	844	0.22	1051	0.40	1233	0.60	1408	0.84	1567	1.09	1710	1.34	1965	1.88	2191	2.49
1900	1182	928	0.29	1110	0.49	1276	0.71	1429	0.95	1579	1.23	1722	1.52	1977	2.11	2201	2.73
2200	1369	1020	0.38	1178	0.60	1333	0.84	1475	1.10	1607	1.37	1738	1.67	1989	2.34	2213	3.02
2500	1556	1116	0.50	1258	0.73	1397	1.00	1532	1.28	1657	1.56	1774	1.87	2004	2.55	2225	3.31
2800	1742	1216	0.63	1346	0.89	1470	1.17	1594	1.47	1714	1.79	1826	2.11	2035	2.79	2241	3.57
3100	1929	1319	0.80	1439	1.07	1552	1.37	1664	1.69	1775	2.03	1884	2.38	2084	3.10	2271	3.87
3400	2116	1422	0.99	1535	1.29	1640	1.61	1742	1.94	1844	2.30	1946	2.67	2140	3.44	2319	4.24
3700	2303	1528	1.22	1633	1.54	1732	1.88	1827	2.23	1921	2.61	2014	3.00	2199	3.81	2374	4.66
4000	2489	1634	1.48	1734	1.83	1827	2.19	1916	2.56	2003	2.95	2090	3.36	2263	4.22	-	-
4300	2676	1741	1.78	1836	2.16	1924	2.54	2008	2.92	2090	3.33	2172	3.76	2333	4.66	-	-
4600	2863	1849	2.12	1939	2.52	2023	2.93	2103	3.34	2181	3.76	2257	4.20	-	-	-	-
4900	3050	1958	2.50	2044	2.93	2124	3.36	2201	3.80	2274	4.24	2347	4.70	-	-	-	-
5200	3236	2067	2.93	2149	3.39	2226	3.85	2299	4.30	2370	4.77	-	-	-	-	-	-
5500	3423	2177	3.41	2255	3.89	2329	4.38	2400	4.86	-	-	-	-	-	-	-	-

Model BI-18

MINIMUM 3/4 HP MOTOR RECOMMENDED, 7-1/2 HP MAXIMUM

MAXIMUM 2200 RPM

1-3/16" SHAFT

TIP SPEED : 4.78 x RPM = FPM

WHEEL DIA. = 18.25"

CFM	OUTLET VELOCITY	1/2" SP		1" SP		1-1/2" SP		2" SP		2-1/2" SP		3" SP		4" SP		5" SP	
	FPM	RPM	BHP	RPM	BHP	RPM	BHP	RPM	BHP	RPM	BHP	RPM	BHP	RPM	BHP	RPM	BHP
2000	1025	772	0.29	956	0.50	1118	0.75	1274	1.05	1418	1.36	1547	1.67	1778	2.34	1982	3.08
2300	1178	833	0.36	1000	0.60	1151	0.86	1290	1.15	1427	1.49	1556	1.84	1787	2.56	1990	3.32
2600	1332	901	0.45	1049	0.71	1192	0.99	1322	1.29	1444	1.63	1566	2.00	1795	2.80	1998	3.61
2900	1486	971	0.55	1106	0.84	1237	1.14	1362	1.46	1477	1.80	1587	2.17	1805	3.01	2007	3.90
3200	1640	1044	0.67	1168	0.99	1288	1.32	1406	1.66	1517	2.02	1621	2.39	1820	3.22	2016	4.17
3500	1793	1118	0.82	1233	1.16	1344	1.51	1453	1.87	1560	2.25	1661	2.64	1848	3.48	2030	4.43
3800	1947	1194	0.98	1302	1.35	1405	1.72	1506	2.11	1606	2.51	1704	2.93	1885	3.79	2054	4.74
4100	2101	1271	1.17	1373	1.56	1469	1.96	1563	2.38	1657	2.80	1750	3.23	1927	4.14	2089	5.10
4400	2255	1348	1.38	1446	1.80	1536	2.23	1625	2.67	1712	3.11	1799	3.57	1970	4.52	2129	5.52
4700	2409	1426	1.63	1519	2.06	1606	2.52	1689	2.99	1771	3.46	1853	3.94	2015	4.93	2171	5.97
5000	2562	1505	1.90	1594	2.36	1677	2.84	1756	3.33	1834	3.83	1911	4.34	2064	5.37	-	-
5300	2716	1584	2.21	1670	2.69	1749	3.19	1825	3.71	1899	4.24	1972	4.77	2116	5.85	-	-
5600	2870	1664	2.54	1746	3.05	1822	3.57	1895	4.12	1965	4.67	2035	5.23	2172	6.36	-	-
5900	3024	1744	2.92	1823	3.44	1897	3.99	1966	4.56	2034	5.14	2101	5.73	-	-	-	-
6200	3177	1825	3.33	1901	3.88	1972	4.45	2039	5.04	2104	5.65	2168	6.26	-	-	-	-
6500	3331	1906	3.78	1979	4.36	2047	4.95	2113	5.56	2175	6.19	-	-	-	-	-	-
6800	3485	1987	4.27	2057	4.87	2124	5.49	2187	6.12	-	-	-	-	-	-	-	-

Power rating (BHP) does not include drive losses.

Performance shown is for installation Type B - Free inlet, Ducted outlet.

Performance ratings do not include the effects of appurtenances in the airstream.

SI CONVERSION FACTOR

CFM x .472 = L/s

SP x .249 = kPa

"BI" SERIES PERFORMANCE DATA

Model BI-20

MINIMUM 1 HP MOTOR RECOMMENDED, 7-1/2 HP MAXIMUM
1-3/16" SHAFT

MAXIMUM 1950 RPM
WHEEL DIA. = 20.00"

TIP SPEED : 5.24 x RPM = FPM

CFM	OUTLET VELOCITY	1/2" SP		1" SP		1-1/2" SP		2" SP		2-1/2" SP		3" SP		4" SP		5" SP	
	FPM	RPM	BHP	RPM	BHP	RPM	BHP	RPM	BHP	RPM	BHP	RPM	BHP	RPM	BHP	RPM	BHP
2250	968	677	0.29	858	0.54	1020	0.83	1160	1.15	1289	1.49	1410	1.86	1628	2.63	1819	3.46
2500	1075	713	0.34	877	0.61	1035	0.90	1172	1.23	1296	1.60	1413	1.98	1628	2.80	1821	3.66
2750	1183	752	0.40	903	0.68	1050	0.99	1187	1.33	1308	1.70	1421	2.11	1629	2.96	1820	3.87
3000	1290	793	0.46	933	0.76	1069	1.09	1202	1.44	1322	1.82	1432	2.23	1634	3.13	1821	4.08
3250	1398	835	0.53	967	0.84	1093	1.19	1218	1.56	1338	1.95	1447	2.37	1644	3.29	1824	4.28
3500	1505	879	0.62	1003	0.94	1121	1.31	1237	1.69	1353	2.10	1462	2.53	1656	3.46	1832	4.49
3750	1613	924	0.71	1041	1.05	1153	1.43	1261	1.83	1370	2.26	1477	2.70	1670	3.65	1843	4.70
4000	1721	969	0.81	1081	1.18	1187	1.56	1289	1.98	1391	2.43	1493	2.89	1685	3.85	1856	4.92
4250	1828	1016	0.92	1122	1.31	1223	1.71	1321	2.14	1416	2.61	1512	3.08	1700	4.08	1871	5.16
4500	1936	1063	1.05	1165	1.45	1261	1.87	1354	2.32	1445	2.79	1535	3.29	1716	4.32	1886	5.42
4750	2043	1110	1.19	1208	1.61	1300	2.05	1390	2.51	1476	3.00	1562	3.51	1733	4.58	1901	5.70
5000	2151	1157	1.34	1252	1.78	1341	2.24	1426	2.71	1510	3.21	1592	3.74	1754	4.85	1916	6.00
5250	2258	1205	1.51	1297	1.96	1382	2.44	1464	2.93	1545	3.45	1623	3.98	1778	5.13	1934	6.32
5500	2366	1254	1.69	1342	2.16	1425	2.66	1504	3.17	1581	3.70	1657	4.25	1806	5.42	-	-
5750	2473	1303	1.89	1388	2.37	1468	2.89	1544	3.42	1619	3.96	1692	4.53	1835	5.73	-	-
6000	2581	1352	2.10	1435	2.60	1512	3.14	1586	3.69	1658	4.25	1729	4.83	1867	6.05	-	-
6250	2689	1401	2.33	1481	2.85	1556	3.40	1628	3.97	1698	4.55	1766	5.15	1900	6.39	-	-
6500	2796	1450	2.58	1529	3.12	1601	3.68	1671	4.27	1738	4.87	1805	5.48	1934	6.76	-	-
6750	2904	1500	2.85	1576	3.40	1647	3.98	1714	4.59	1780	5.21	1844	5.84	-	-	-	-
7000	3011	1550	3.13	1624	3.70	1693	4.30	1758	4.93	1822	5.57	1885	6.22	-	-	-	-
7250	3119	1600	3.44	1671	4.03	1739	4.64	1803	5.29	1865	5.95	1926	6.61	-	-	-	-
7500	3226	1651	3.76	1720	4.37	1786	5.01	1848	5.66	1908	6.34	-	-	-	-	-	-
7750	3334	1701	4.11	1768	4.74	1832	5.39	1894	6.06	-	-	-	-	-	-	-	-
8000	3442	1752	4.47	1817	5.13	1880	5.79	1939	6.48	-	-	-	-	-	-	-	-
8250	3549	1803	4.86	1865	5.54	1927	6.22	-	-	-	-	-	-	-	-	-	-
8500	3657	1854	5.27	1914	5.97	-	-	-	-	-	-	-	-	-	-	-	-

Model BI-22

MINIMUM 1 HP MOTOR RECOMMENDED, 10 HP MAXIMUM
1-3/16" SHAFT

MAXIMUM 1750 RPM
WHEEL DIA. = 22.25"

TIP SPEED : 5.83 x RPM = FPM

CFM	OUTLET VELOCITY	1/2" SP		1" SP		1-1/2" SP		2" SP		2-1/2" SP		3" SP		4" SP		5" SP	
	FPM	RPM	BHP	RPM	BHP	RPM	BHP	RPM	BHP	RPM	BHP	RPM	BHP	RPM	BHP	RPM	BHP
2500	864	581	0.31	758	0.60	905	0.94	1036	1.33	1158	1.73	1268	2.16	1462	3.07	1629	4.05
2800	968	610	0.36	772	0.67	917	1.03	1043	1.42	1159	1.86	1268	2.31	1465	3.27	1635	4.29
3100	1072	641	0.42	788	0.75	931	1.12	1054	1.53	1165	1.98	1270	2.46	1464	3.46	1637	4.54
3400	1175	675	0.49	811	0.84	944	1.22	1067	1.64	1175	2.11	1276	2.60	1465	3.66	1638	4.79
3700	1279	711	0.57	837	0.93	960	1.34	1080	1.78	1188	2.25	1287	2.76	1468	3.86	1637	5.04
4000	1383	748	0.65	867	1.04	980	1.47	1094	1.92	1201	2.40	1299	2.92	1476	4.06	1639	5.28
4300	1487	786	0.75	898	1.16	1005	1.60	1110	2.08	1215	2.58	1312	3.11	1487	4.26	1645	5.53
4600	1590	825	0.86	931	1.29	1032	1.75	1131	2.25	1229	2.77	1326	3.31	1499	4.49	1655	5.78
4900	1694	865	0.98	966	1.43	1062	1.91	1155	2.42	1247	2.97	1339	3.53	1513	4.73	1666	6.04
5200	1798	905	1.12	1001	1.59	1093	2.08	1181	2.61	1268	3.18	1356	3.77	1526	4.99	1679	6.33
5500	1902	946	1.26	1038	1.76	1126	2.27	1210	2.82	1293	3.40	1375	4.01	1539	5.28	1692	6.63
5800	2005	987	1.43	1076	1.94	1160	2.48	1241	3.04	1320	3.64	1398	4.27	1554	5.59	1705	6.96
6100	2109	1028	1.61	1114	2.14	1195	2.70	1272	3.28	1348	3.90	1423	4.54	1571	5.90	1719	7.32
6400	2213	1070	1.80	1153	2.35	1230	2.94	1305	3.54	1379	4.17	1450	4.83	1591	6.24	1733	7.70
6700	2317	1112	2.01	1192	2.59	1267	3.19	1339	3.82	1410	4.47	1479	5.14	1614	6.58	1749	8.09
7000	2420	1154	2.24	1232	2.84	1305	3.47	1374	4.11	1442	4.78	1509	5.47	1639	6.94	-	-
7300	2524	1197	2.49	1273	3.10	1343	3.76	1410	4.43	1476	5.11	1540	5.82	1666	7.32	-	-
7600	2628	1240	2.76	1313	3.39	1381	4.07	1446	4.76	1510	5.47	1573	6.19	1694	7.72	-	-
7900	2732	1283	3.05	1354	3.70	1420	4.39	1484	5.11	1545	5.84	1606	6.59	1724	8.15	-	-
8200	2835	1326	3.36	1395	4.03	1460	4.74	1521	5.48	1581	6.24	1640	7.01	-	-	-	-
8500	2939	1370	3.69	1437	4.38	1500	5.12	1560	5.88	1618	6.66	1675	7.45	-	-	-	-
8800	3043	1413	4.04	1478	4.76	1540	5.51	1598	6.29	1655	7.10	1710	7.91	-	-	-	-
9100	3147	1457	4.41	1520	5.16	1580	5.93	1637	6.73	1692	7.56	1746	8.40	-	-	-	-
9400	3250	1501	4.81	1562	5.58	1621	6.37	1677	7.20	1730	8.04	-	-	-	-	-	-
9700	3354	1545	5.24	1604	6.03	1662	6.84	1716	7.68	-	-	-	-	-	-	-	-
10000	3458	1589	5.69	1647	6.50	1703	7.33	-	-	-	-	-	-	-	-	-	-

Power rating (BHP) does not include drive losses.

Performance shown is for installation Type B - Free inlet, Ducted outlet.

Performance ratings do not include the effects of appurtenances in the airstream.

SI CONVERSION FACTOR

CFM x .472 = L/s SP x .249 = kPa

"BI" SERIES PERFORMANCE DATA

Model BI-24

MINIMUM 1 HP MOTOR RECOMMENDED, 15 HP MAXIMUM
1-7/16" SHAFT

MAXIMUM 1600 RPM
WHEEL DIA. = 24.50"

CFM	OUTLET VELOCITY	1/2" SP		1" SP		1-1/2" SP		2" SP		2-1/2" SP		3" SP		4" SP		5" SP	
	FPM	RPM	BHP	RPM	BHP	RPM	BHP	RPM	BHP	RPM	BHP	RPM	BHP	RPM	BHP	RPM	BHP
3000	857	526	0.37	688	0.72	822	1.14	941	1.60	1050	2.09	1151	2.60	1328	3.70	1483	4.89
3500	1000	562	0.46	705	0.84	836	1.27	950	1.76	1053	2.29	1151	2.85	1329	4.03	1486	5.29
4000	1143	603	0.56	729	0.98	853	1.44	965	1.94	1064	2.50	1157	3.10	1329	4.36	1486	5.70
4500	1286	647	0.69	761	1.13	872	1.63	981	2.16	1079	2.73	1169	3.35	1334	4.69	1486	6.12
5000	1429	693	0.84	799	1.31	899	1.84	999	2.41	1096	3.00	1185	3.63	1345	5.02	1491	6.53
5500	1572	742	1.01	839	1.52	932	2.08	1022	2.68	1113	3.31	1201	3.96	1359	5.38	1501	6.94
6000	1715	791	1.21	882	1.76	969	2.34	1052	2.97	1135	3.64	1218	4.33	1376	5.78	1515	7.38
6500	1858	841	1.45	927	2.03	1008	2.64	1087	3.30	1163	4.00	1240	4.73	1392	6.23	1531	7.86
7000	2000	893	1.71	974	2.33	1050	2.98	1124	3.66	1196	4.39	1267	5.15	1410	6.74	1548	8.40
7500	2143	944	2.01	1022	2.66	1094	3.35	1164	4.07	1232	4.81	1299	5.61	1432	7.27	1564	9.00
8000	2286	997	2.35	1071	3.04	1139	3.76	1206	4.51	1271	5.29	1334	6.10	1459	7.83	1583	9.64
8500	2429	1050	2.73	1120	3.45	1186	4.21	1249	5.00	1311	5.80	1371	6.64	1489	8.43	-	-
9000	2572	1103	3.15	1171	3.90	1234	4.70	1294	5.53	1353	6.37	1411	7.24	1523	9.07	-	-
9500	2715	1156	3.61	1222	4.40	1282	5.24	1340	6.10	1396	6.98	1452	7.88	1560	9.76	-	-
10000	2858	1210	4.13	1273	4.95	1331	5.82	1387	6.72	1441	7.64	1494	8.57	1598	10.50	-	-
10500	3001	1265	4.69	1325	5.55	1381	6.45	1435	7.39	1487	8.35	1538	9.32	-	-	-	-
11000	3144	1319	5.30	1377	6.20	1432	7.14	1484	8.11	1534	9.10	1583	10.10	-	-	-	-
11500	3287	1374	5.97	1429	6.91	1483	7.88	1533	8.88	1581	9.92	-	-	-	-	-	-
12000	3430	1429	6.70	1482	7.68	1534	8.68	1583	9.72	-	-	-	-	-	-	-	-
12500	3573	1485	7.48	1535	8.51	1585	9.54	-	-	-	-	-	-	-	-	-	-
13000	3716	1540	8.33	1589	9.39	-	-	-	-	-	-	-	-	-	-	-	-

Model BI-27

MINIMUM 1 HP MOTOR RECOMMENDED, 15 HP MAXIMUM
1-7/16" SHAFT

MAXIMUM 1450 RPM
WHEEL DIA. = 27.00"

CFM	OUTLET VELOCITY	1/2" SP		1" SP		1-1/2" SP		2" SP		2-1/2" SP		3" SP		4" SP		5" SP	
	FPM	RPM	BHP	RPM	BHP	RPM	BHP	RPM	BHP	RPM	BHP	RPM	BHP	RPM	BHP	RPM	BHP
4000	946	482	0.51	615	0.96	732	1.47	834	2.06	928	2.68	1016	3.33	1173	4.72	1310	6.21
4500	1065	510	0.61	630	1.09	744	1.62	843	2.23	933	2.89	1017	3.58	1173	5.06	1312	6.62
5000	1183	541	0.73	650	1.23	756	1.80	855	2.42	942	3.10	1023	3.83	1174	5.39	1311	7.04
5500	1302	573	0.85	674	1.39	771	2.00	867	2.64	954	3.33	1033	4.08	1178	5.71	1312	7.45
6000	1420	607	0.99	701	1.57	790	2.20	879	2.89	965	3.60	1044	4.37	1185	6.05	1315	7.86
6500	1538	642	1.13	730	1.78	813	2.43	896	3.15	978	3.90	1056	4.68	1196	6.40	1322	8.27
7000	1657	677	1.30	760	2.02	839	2.68	916	3.43	992	4.23	1068	5.04	1207	6.78	1331	8.70
7500	1775	714	1.51	792	2.27	867	2.98	939	3.74	1010	4.57	1082	5.43	1219	7.20	1342	9.15
8000	1893	750	1.75	825	2.53	896	3.30	965	4.07	1032	4.93	1098	5.83	1231	7.68	1354	9.65
8500	2012	788	2.04	859	2.80	927	3.66	992	4.45	1056	5.31	1119	6.24	1244	8.19	1366	10.20
9000	2130	825	2.38	894	3.08	959	4.03	1021	4.87	1082	5.74	1141	6.69	1260	8.72	1378	10.80
9500	2248	863	2.77	930	3.40	991	4.41	1051	5.33	1109	6.22	1166	7.17	1279	9.26	1391	11.40
10000	2367	901	3.21	965	3.76	1025	4.81	1082	5.81	1138	6.74	1193	7.70	1300	9.83	1407	12.10
10500	2485	940	3.69	1002	4.17	1059	5.21	1114	6.31	1168	7.31	1220	8.29	1323	10.40	1425	12.80
11000	2604	979	4.22	1038	4.63	1094	5.65	1147	6.82	1198	7.90	1249	8.92	1348	11.10	1445	13.50
11500	2722	1018	4.78	1075	5.15	1129	6.12	1180	7.35	1230	8.52	1279	9.60	1375	11.80	-	-
12000	2840	1057	5.38	1113	5.74	1165	6.63	1214	7.89	1262	9.15	1310	10.30	1402	12.60	-	-
12500	2959	1096	6.02	1150	6.40	1201	7.21	1249	8.45	1295	9.80	1341	11.10	1431	13.40	-	-
13000	3077	1136	6.70	1188	7.13	1237	7.84	1284	9.06	1329	10.50	1373	11.80	-	-	-	-
13500	3195	1176	7.41	1226	7.94	1274	8.54	1319	9.71	1363	11.10	1406	12.60	-	-	-	-
14000	3314	1216	8.17	1264	8.82	1311	9.32	1355	10.40	1398	11.90	1440	13.40	-	-	-	-
14500	3432	1256	8.96	1303	9.76	1348	10.20	1391	11.20	1433	12.60	-	-	-	-	-	-
15000	3550	1296	9.81	1341	10.80	1386	11.10	1428	12.10	-	-	-	-	-	-	-	-
15500	3669	1336	10.70	1380	11.80	1423	12.20	-	-	-	-	-	-	-	-	-	-
16000	3787	1377	11.60	1419	12.90	-	-	-	-	-	-	-	-	-	-	-	-

Power rating (BHP) does not include drive losses.

Performance shown is for installation Type B - Free inlet, Ducted outlet.

Performance ratings do not include the effects of appurtenances in the airstream.

SI CONVERSION FACTOR

CFM x .472 = L/s SP x .249 = kPa