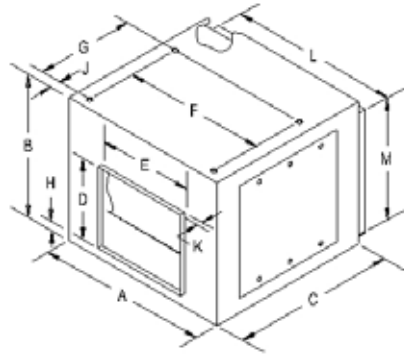
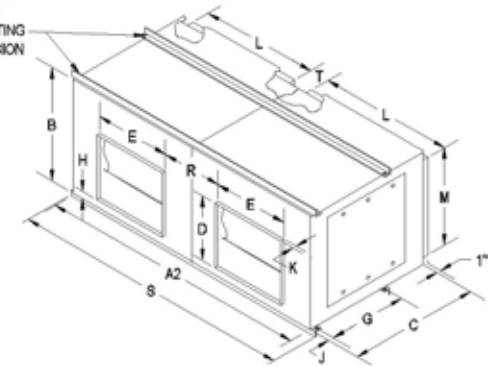


200, 200-2, 9200 & 9200-2 SERIES DIMENSIONS



**200 Series
Single Unit**

STRUCTURAL STEEL ANGLE
TWINNING RAIL, TOP AND
BOTTOM WITH 5/8" MOUNTING
HOLES ON "G & S" DIMENSION
CENTRES.



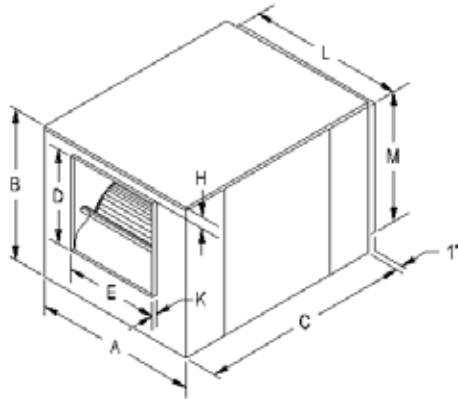
**200-2 Series
Twin Unit**

DIMENSIONS (inches)

NOTE: WT. SHOWN IS LESS MOTOR AND DRIVE

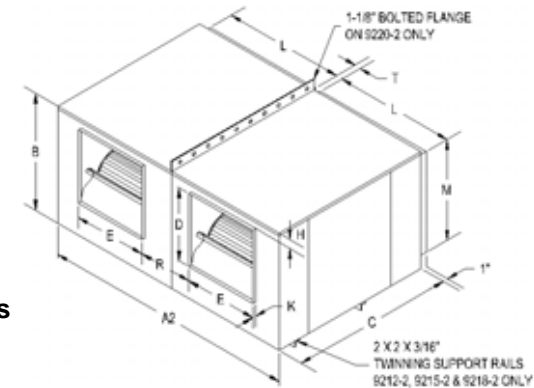
MODEL	A	A2	B	C	D	E	F	G	H	J	K	L	M	R	S	T	Unit Wt. (lbs.)	
																	Single	Twin
207 & 207-2	18	36	15-3/8	23	8-1/4	9-3/16	14-1/2	9-5/8	1-1/4	1-1/4	7/8	15-7/8	13-3/8	8-13/16	38-1/4	2	43	112
209 & 209-2	21	42	18	23	10-1/4	11-13/16	17-1/2	11-3/4	1-1/4	1-3/4	7/8	19	16	9-3/16	44-1/4	2	55	142
210 & 210-2	22-1/4	44-1/2	20	24-3/4	11-3/8	13-1/8	18-3/4	13-3/8	1-1/4	1-3/4	7/8	20-1/4	18	9-1/8	46-3/4	2	65	152
212 & 212-2	27	54	23	27-1/2	13-7/16	15-5/8	23-1/2	16-1/8	1-1/4	1-3/4	7/8	25	21	11-3/8	56-1/4	2	82	191
215 & 215-2	33-1/2	67	28	32	15-7/8	18-5/8	28	19-1/2	2-5/8	1-3/4	7/8	30-1/2	25	14-7/8	69-1/4	3	140	287
218	41-1/2	--	34	44	19-5/8	22-5/8	35	24	2-3/4	1-3/4	1-1/8	35-3/8	31-5/8	--	--	--	158	--

- 4 -



Note: Dimensions also applicable to 9200-VIB series with internal vibration isolation (not available in twinned configuration)

**9200 Series
Single Unit**

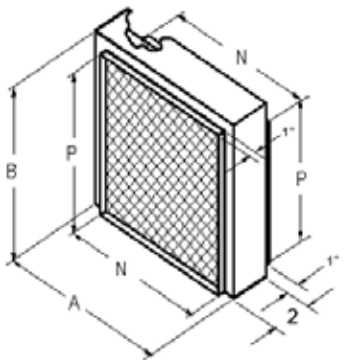


**9200-2 Series
Twin Unit**

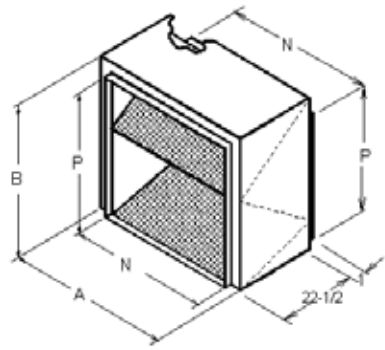
MODEL	A	A2	B	C	D	E	H	K	L	M	R	T	Unit Wt. (lbs.)	
													Single	Twin
9209 & 9209-2	21	42	18	23	11-1/4	12-3/4	1	1-1/8	19	16	9-1/4	2	61	140
9210 & 9210-2	22-1/4	44-1/2	20	24-3/4	12-3/8	14-1/8	1	1-1/8	20-1/4	18	9-1/8	2	70	165
9212 & 9212-2	30-1/8	60-1/8	24-3/4	34	14-1/2	16-5/8	2-1/8	1-1/8	25-1/8	21-1/8	13-1/4	4-3/4	143	334
9215 & 9215-2	33-3/4	67-5/8	28-5/8	38-1/8	17	19-5/8	2-1/8	1-1/8	30-5/8	25-1/4	14-1/8	2-7/8	176	403
9218 & 9218-2	41-1/2	83-3/8	34	44	19-5/8	22-5/8	2-3/4	1-1/8	35-3/8	31-5/8	19	6-1/4	323	666
9220 & 9220-2	44-3/4	89-1/2	41-1/8	57-1/2	25-3/4	25-3/4	3	1-1/8	38-3/8	35-1/8	19	6-1/8	515	1048

F200A SERIES & F9220A FILTER SECTIONS,

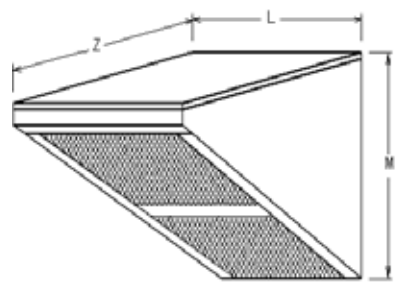
H9200 SERIES INTAKE HOODS



**SERIES F200A
FILTER SECTION**



**F9220A
FILTER SECTION**



**SERIES H9220
INTAKE HOOD**

DIMENSIONS (inches)

MODEL	A	B	N	P	FILTER SIZE - (QTY.)	UNIT WT. (LBS.)	MODEL	L	M	Z	FILTER SIZE - (QTY.)	UNIT WT. (LBS.)
F207A	17-3/4	15-3/8	16	13-1/2	14-1/8 x 16-5/8 (1)	11	N/A	--	--	--	--	--
F209A	21	18	19-1/8	16-1/8	16-3/4 x 19-7/8 (1)	12	H9209	19-1/4	16-9/16	21-1/4	16 x 24 (1)	14
F210A	22-1/4	20	20-3/8	18-1/8	18-3/4 x 21-1/8 (1)	14	H9210	20-1/2	18-9/16	25-3/4	15 x 20 (2)	16
F212A	27	23	25-1/8	21-1/8	21-3/4 x 25-7/8 (1)	16	H9212	25-3/8	21-9/16	30-3/4	20 x 25 & 16 x 25 (2)	27
F215A	32-1/2	26-3/4	30-5/8	25-1/8	25-3/4 x 31 (1)	21	H9215	31-3/16	25-13/16	33-1/2	20 x 28-1/2 (2)	38
F218A	37	33-1/4	35-1/4	31-1/2	32-1/4 x 35-7/8 (1)	46	H9218	35-5/8	32-11/16	40-1/4	20 x 25 (2) & 16 x 25 (2)	50
F9220A	39-3/4	37-1/4	38-1/2	35-1/4	20 x 25 (6)	64	H9220	38-5/8	35-9/16	22	SEE F9220A	40

ALL FILTER SECTIONS HAVE 1" ALUMINUM FILTERS

INTAKE HOODS (EXCEPT H9220 HAVE 1" ALUMINUM FILTERS. H9220 HAS SCREENED INLET FOR USE WITH F9220A FILTER SECTION.

NOTE: TWIN DUCT BLOWERS REQUIRE TWO FILTER SECTIONS AND/OR TWO HOOD SECTIONS

PRESSURE DROP in. wg WITH 1" ALUMINUM FILTERS

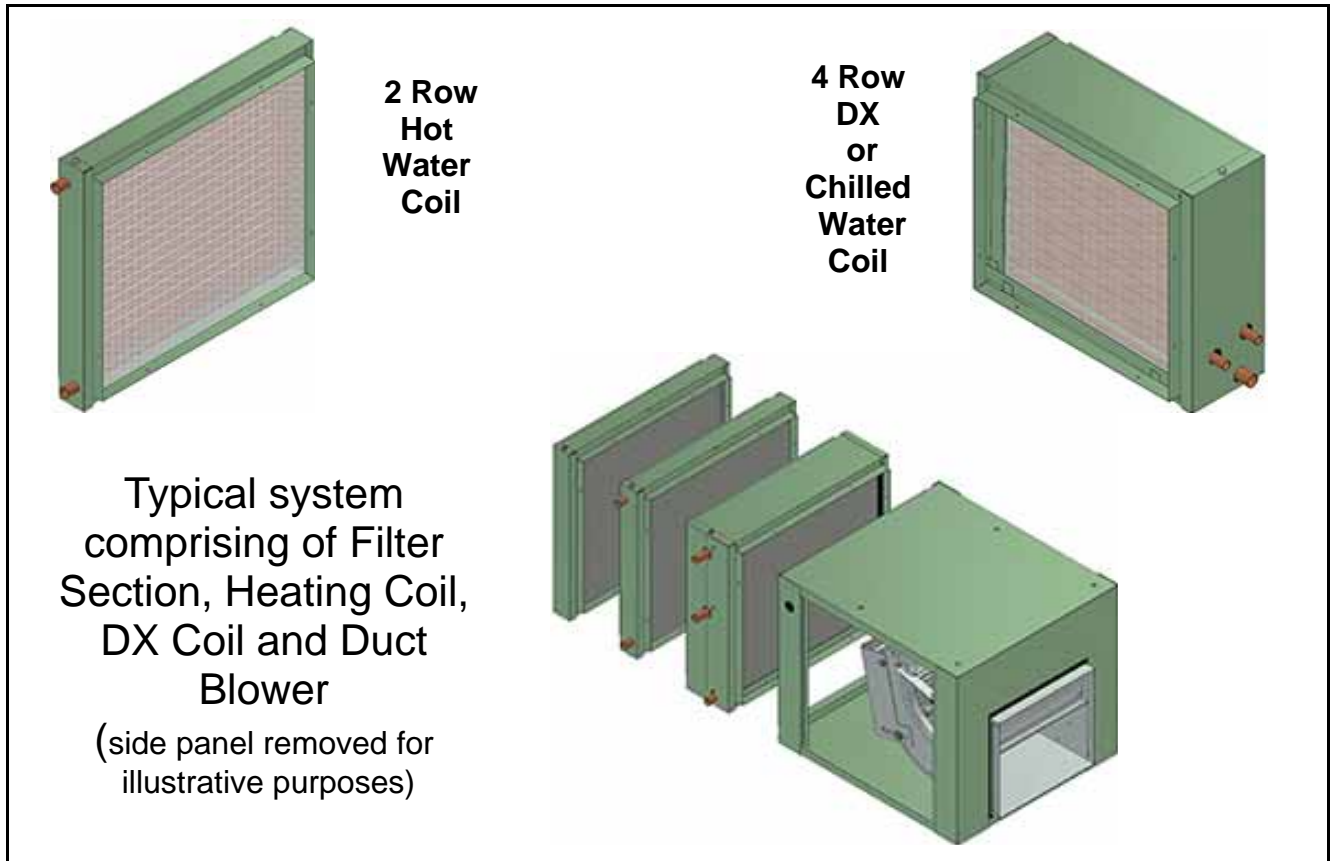
CFM	FILTER SECTION							HOOD SECTION				
	F207A	F209A	F210A	F212A	F215A	F218A	F9220A	H9209	H9210	H9212	H9215	H9218
300	.010	.007						.013				
400	.018	.010						.018				
600	.030	.020	.013					.030	.018			
800	.067	.026	.022	.012				.043	.025	.015		
1000	.117	.042	.028	.020				.065	.034	.019		
1200	.171	.073	.041	.023	.012			.093	.043	.023	.017	
1300		.091	.053	.025	.015			.107	.049	.027	.019	
1400		.109	.067	.029	.018			.122	.055	.030	.020	
1600		.145	.095	.038	.021	.011			.072	.035	.025	.015
1800		.182	.124	.054	.024	.013			.091	.042	.030	.017
2000			.154	.073	.026	.017			.109	.048	.034	.019
2500				.126	.042	.023				.073	.045	.025
3000				.182	.073	.028				.103	.061	.032
3500					.110	.040				.131	.082	.040
4000					.147	.057	.023				.107	.048
4500					.182	.082	.027				.130	.059
5000						.107	.032					.072
5500						.132	.036					.088
6000						.157	.040					.103
6500						.182	.046					.117
7000							.052					.131
7500							.058					
8000							.065					
8500							.074					
9000							.082					
10000							.101					
11000							.118					
12000							.137					

MAXIMUM CFM

1250	1800	2200	3500	4500	6700	12000	1450	2200	3500	4500	7000
------	------	------	------	------	------	-------	------	------	------	------	------

Hot Water, Chilled Water & DX Coils

Coils are designed to be mounted on the inlet of 200 or 9200 series duct blowers, or to each other. The modular concept provides designers with the flexibility and convenience of assembling readily available components into a system to meet their application heating and cooling requirements.



Duct Blower	Matching Coil Sections				
	Heating Coil	Chilled Water Coil	DX Coil	Filter	Intake Hood
207	HC-07	CW-07	DX-18-07	F207A	N/A
209 or 9209	HC-09	CW-09	DX-24-09	F209A	H9209
210 or 9210	HC-10	CW-10	DX-30/36-10	F210A	H9210
212 or 9212	HC-12	CW-12	DX-42/48-12	F212A	H9212
215 or 9215	HC-15	CW-15	DX-60-15	F215A	H9215

