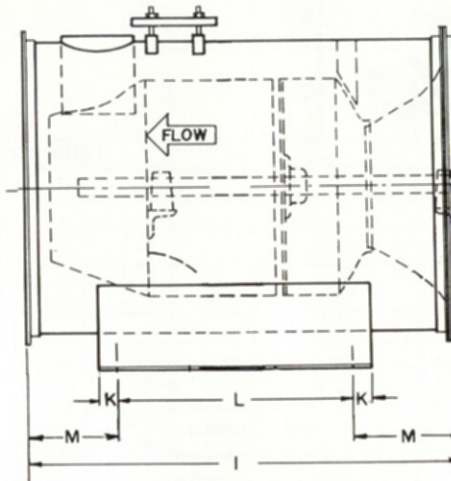
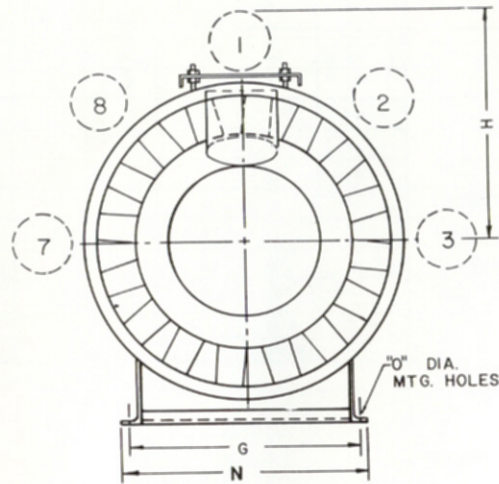


BEARINGS ENCLOSED INSIDE
INNER TUBE



OUTBOARD BEARING IN AIRSTREAM

SIZE	MOTOR LOC.	MOTOR H.P.	CURRENT	C.F.M.	S.P.	RPM	B.H.P.	O.V.	T.S.	TAG UNIT								
122	16 3/4	25 1/2	18 1/2	19 3/4	13 1/2	11	14	25	27	11 1/4	1	19	2 1/4	15 1/4	3/16	1 1/8	1 1/8	—
150	20 1/2	29	22	23 1/2	15	13	16 3/4	32	30 1/2	13 3/4	1 1/2	21	4	18	3/8	1 3/8	1 3/8	—
180	24 3/4	33	26 3/4	28 3/4	15 1/2	16	19 3/4	34	32	16 1/2	1 1/2	22 3/4	5 1/2	20 3/4	3/8	1 3/8	1 3/8	1 1/8
200	27	36 1/4	29	31	17 1/8	18	21 3/4	36	34 1/4	18 1/2	2	24 1/4	6	23 3/4	3/8	1 3/8	1 3/8	1 1/8
220	30	40	32	34	19	20	24 1/2	38	38	20	2	27	6 1/2	26 1/4	3/8	1 3/8	1 3/8	2 3/16
240	33	45	35	37	21	21	27 1/4	40 1/2	43	21 1/2	2	31 1/4	7 1/4	29	3/8	1 3/8	1 11/16	2 3/16
270	36 3/4	49 1/2	38	41 3/4	23 1/2	23	29	43	47	23	2	35 1/4	7 3/4	31	3/8	1 11/16	1 11/16	2 3/16
300	40 1/2	52	42 1/2	45 1/2	26	25	33 1/4	45	54	27 3/4	2	40	7 3/4	35	3/8	1 11/16	1 11/16	2 7/16
330	44 1/2	60	47 1/2	49 1/2	28 3/4	27	37	49 1/2	57 1/2	25 3/4	2 1/2	46	7 3/4	38 3/4	3/8	1 11/16	2 3/8	2 7/16
360	49 1/2	66 1/2	52	54 1/2	32	29	41	52	64	30 3/4	2 1/2	52	7 3/4	43	3/8	1 11/16	2 3/8	2 11/16
400	54 1/2	73	57	59 1/2	35 3/4	33 1/2	45	54	70 1/2	33 3/4	2 1/2	58	7 1/2	47 1/4	1 3/8	2 3/8	2 3/8	2 11/16

JOB

LOCATION

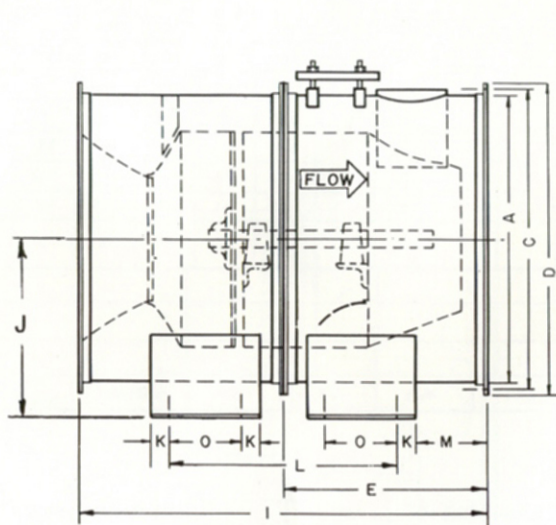
CONTRACTOR

ENGINEER/ARCHITECT

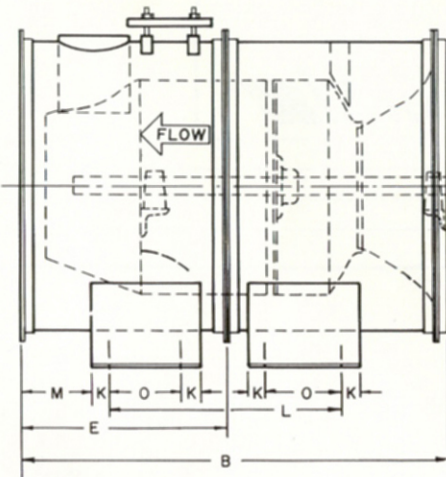
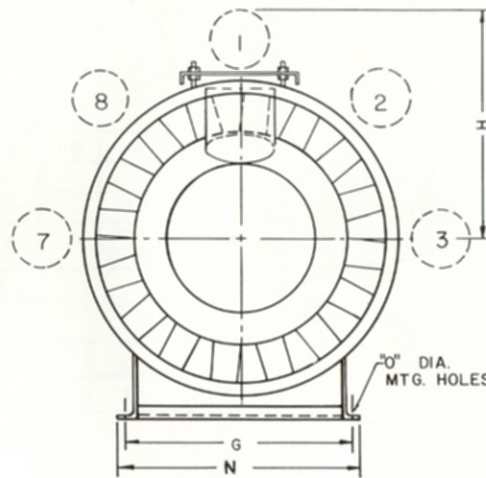
ACCESSORIES

General Air
Products & Systems

GENERAL DIMENSIONS
TYPE "TBA" CLASSES I, II & III
Arrangement No. 9-M
Base Mounted



BEARINGS ENCLOSED INSIDE
INNER TUBE



OUTBOARD BEARING IN AIRSTREAM

UNIT SIZE	MOTOR LOC.	MOTOR H.P.	CURRENT	C.F.M.	S.P.	RPM	B.H.P.	O.V.	T.S.	TAG UNIT	JOB
											LOCATION
											CONTRACTOR
											ENGINEER/ARCHITECT

SIZE	A	B	C	D	E	F	G	H Max.	I	J	K	L	M	N	O	SHAFT DIAMETER		
																CL. I	CL. II	CL. III
440	60½	81	63	65½	39¼	36	50	59	78½	36¾	3	6.4	7½	52¼	22	2⅞	2⅞	2⅞
490	66¾	88½	69¼	71¼	43	39	55¼	62	86	39⅞	3	70	7½	57¼	25¼	2⅞	2⅞	3⅞
540	73½	98	76¾	79½	47½	42½	61¼	66	95	43¾	3	70	9	64	28	2⅞	2⅞	3⅞
600	81½	108½	84½	87½	52¾	46¾	68	70	105½	47¾	4	79½	9	70¾	31¼	2⅞	3⅞	4⅞
660	89½	119	92¾	95½	58	51¾	74½	74	116	51¾	4	90	9	78¾	36½	3⅞	3⅞	4⅞
730	99½	131	102¾	105½	62½	56	80	79	128	56¾	4	99	9	83¾	42½	3⅞	3⅞	4⅞

ACCESSORIES

General Air
Products & Systems

GENERAL DIMENSIONS
TYPE "TBA" CLASSES I, II & III
Arrangement No. 9M
Base Mounted

DWG. # A-1030